

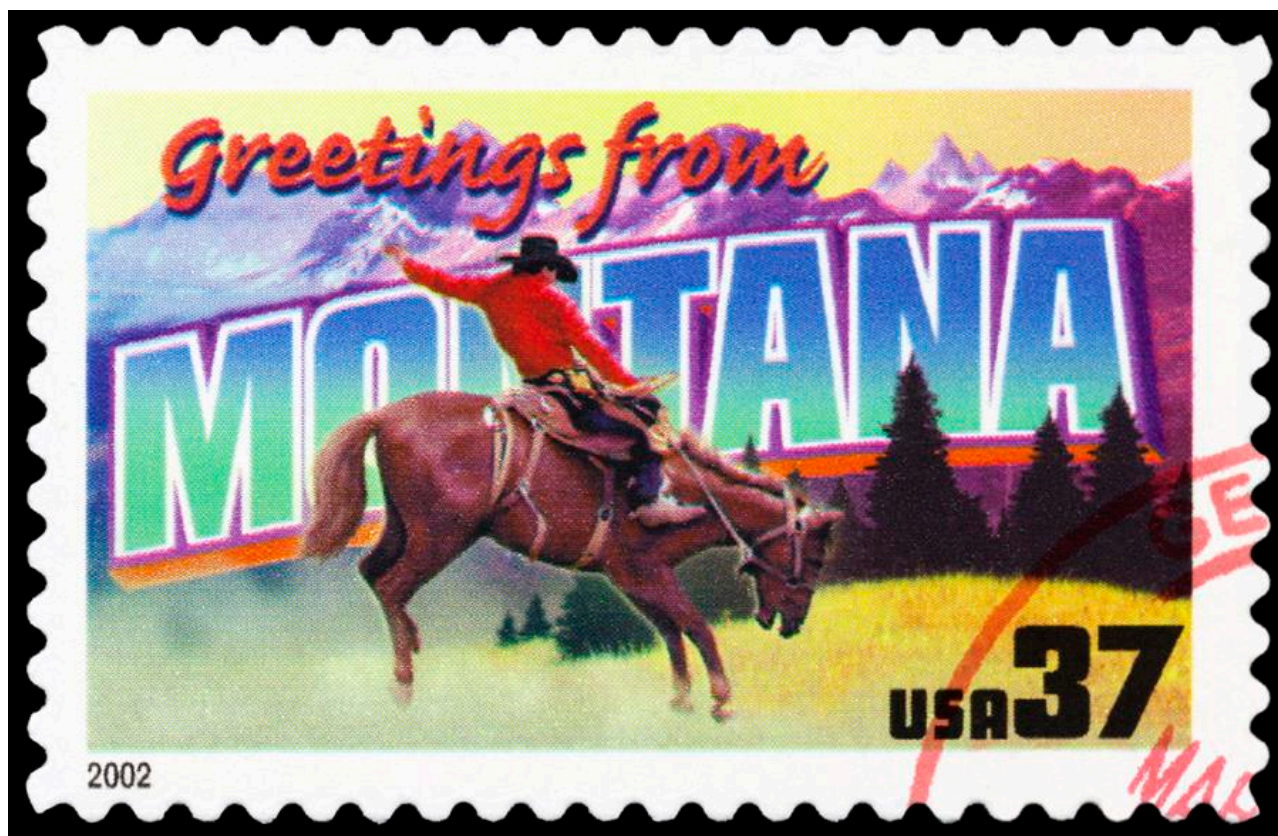
No Images? [Click here](#)



# Center Point

September 2015

Welcome to the September issue of our monthly newsletter - sharing new research, announcements, events and the latest community news.



# We've moved!

We're excited to announce the Center has officially moved as of September 1st to the beautiful city of Bozeman, Montana and to the College of Nursing at Montana State University.

To go along with this, we've given our website and our Twitter a makeover to match our new home. Check it out!

[Read More](#)

## Join Us for Our Fall Webinar Series Starting Sept 23rd

Our themed fall webinar series focusing on the workforce impact of transitioning from fee for service to value based care will begin on **Wednesday, September 23rd** at 2pm EST with a presentation by Richard Lindrooth titled, "***Driving Value in Health Care: The Role of the Nursing Workforce.***" Click on the link below for more information and to register for the event.

### ***Save the date!***

A related webinar on **Tuesday, October 6th**, led by Olga Yakusheva, will use the same definition of value, but will focus on how policies and incentives can either help or hinder value creation. Increasing health care value has increasingly become a central objective of payment policies, insurance design and purchasing, and patient and provider decision-making. For example, the word "value" appeared in the title of seven sections of the Affordable Care Act (ACA), and earlier this year [CMS](#) set a

goal of 50% reimbursement being “value-based.”

This webinar will describe value-based purchasing initiatives and how they will influence the value of nursing care. We highlight evidence on where policy has been successful at increasing value and areas where there is importance for further improvement.

**Register today!**



## Hot off the Press

Peter Buerhaus was featured in a recent article by the Robert Wood Johnson Foundation highlighting recent findings that more nurses are graduating with a BSN than an ADN for the first time in history. Other findings include continued growth and diversity in the nursing workforce.

Click below for the full piece.

[Read More](#)

## *What's Ahead?*

Be on the lookout in the next week for a data brief on physicians assistants and stay tuned for one to follow on physicians.

 [TWEET](#)   [FORWARD](#)

---

Center for Interdisciplinary  
Health Workforce Studies  
College of Nursing - Montana State University  
Anna Pearl Sherrick Hall  
Bozeman, MT 59717

You are receiving this email because you attended one of our webinar events or signed up for updates. Should you no longer wish to hear more about the Center's initiatives and news, please use this link to update your preferences.

[Preferences](#) | [Unsubscribe](#)